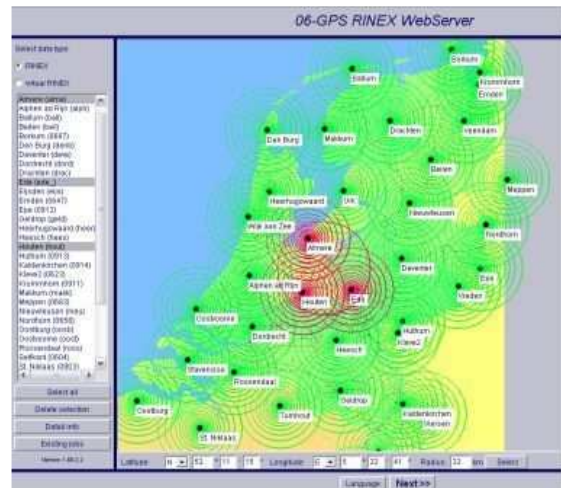


## Collecting of RINEX-data via the 06-GPS RINEX Webservice

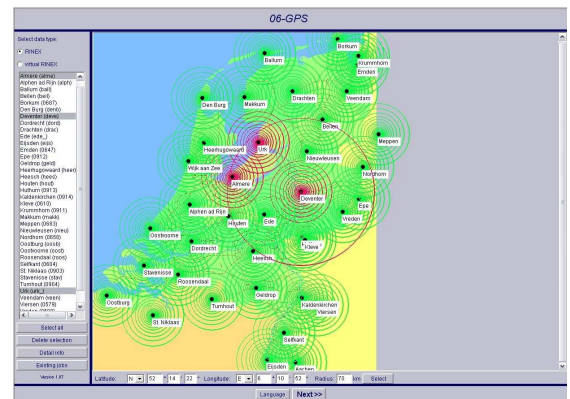
Before using the 06-GPS RINEX Webservice you need to obtain a login name and password with the application form for 06-GPS RINEX Webservice which is available on our website [www.06-gps.nl](http://www.06-gps.nl) at the English page. Also the price list is available there.

- At the [www.06-gps.nl](http://www.06-gps.nl) website open the English page by clicking the link at the bottom of the home page .
  - Start the 06-GPS RINEX Webserver by clicking at Start 06-GPS RINEX Webserver or the screen view. Then click OK in the introduction text window.
  - In the main screen of the webserver you first need to choose the type of RINEX data you wish to collect, in the top at the left of the screen:
    - A RINEX data of base reference station(s)
    - B RINEX data of a Virtual Reference Station (VRS)
- Download-blocking.

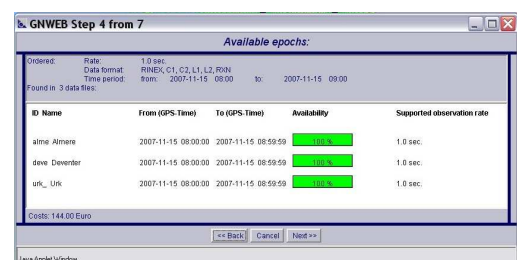
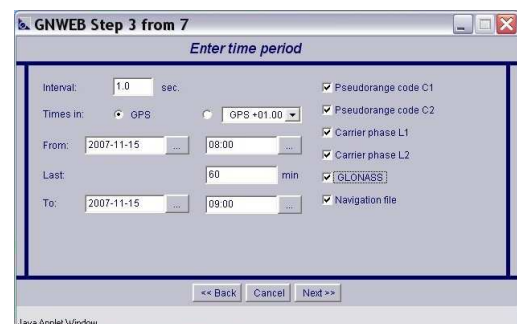


## A RINEX data of base reference station(s)

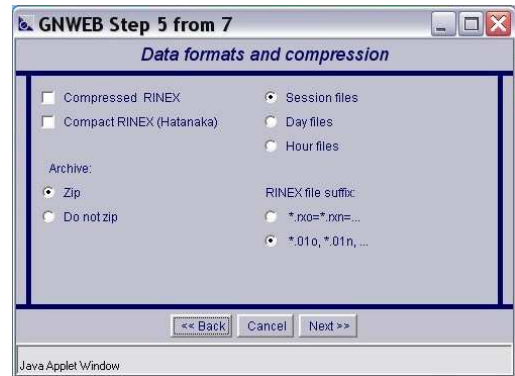
- Select RINEX at the top left above the list of base reference stations.
- Select the base reference stations(s) of which RINEX data is required, in the list at the left or by clicking the dot of the concerning station(s) in the map.
- Double clicking a dot of a station gives a selection of all stations within a radius of a certain distance (km) around that station. De selection radius is visualised by an extra circle in the map. The distance of the radius can be adapted by grab and drag the extra circle with the mouse. The input screen item for the radius at the bottom of the screen only gives the value of the graphical circle, input of a value is possible but does not have any effect on the actual radius in the map or chosen stations.
- The button Delete Selection deselects the stations.
- Click Next >>.
- Check whether the right station(s) is/are selected.
- Click Next >>.



- Set the desired interval (1.0 or 5.0 or a multitude of 5.0 seconds!), date and time and select GLONASS if necessary.
- Click Next >>.
- Check whether the Availability is sufficient for the intended purpose of the data.
- Click Next >>.



- Select the desired data formats and compression methode.
- Click Next >>.



**Authentication:**

- Put in you own project name for the set of data. This project name needs to be unique, the project name will become the name of the zip file containing the data, the name of the data files is constructed of the name of the station and the gps day number. This project name will also be given on your invoice.
- Username and password will be send to you by us after applying by the Application form for RINEX data, available on our website [www.06-gps.nl](http://www.06-gps.nl) at the English page.
- Click Next >>.



- Wait for a few seconds then click Refresh till the concerning project gets the status Ready. Not clicking Refresh makes the project stay on the status Processing. Clicking Refresh too fast too often will make the server crash, however your project/set of data will not be lost, only you need to log on again!
- Then select the project, one project at a time only, and click Download now. With certain network securities you need to hold down the cntrl button while clicking Download now. Also it might be possible the download is blocked in such way that you need to cancel this download blocking feature temporarily. How to do this is given at the end of this manual.

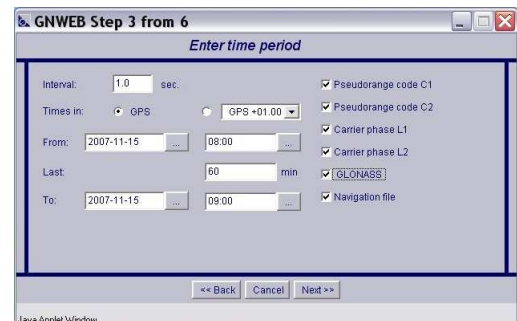
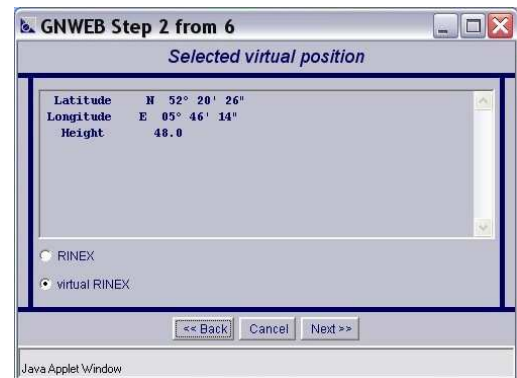
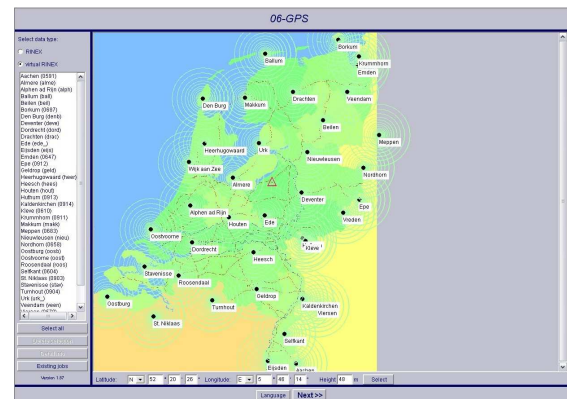


- Send by E-mail is not supported.
- Download the data set file by Safe / Opslaan then unzip.
- You can return to the main screen and start selecting and collecting another set of data or close off the application.



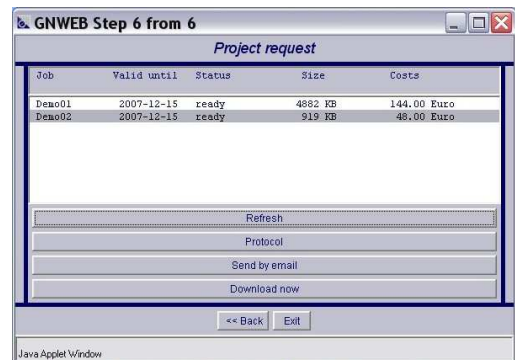
## B RINEX-data van Virtual Reference Station (VRS)

- Select Virtual RINEX at the top left above the list of base reference stations .
- Double click at any random place on the map so a small red triangle shows up.
- Adapt the coordinates and height input values at the bottom of the screen to your VRS coordinate and height in ETRS89 Geographic. Punctuality can be given up to 4 digits decimal. If height is unknown, for The Netherlands the default should be 50 m although the system default is 49 m.
- Click Next >>.
- Check the coordinates and height to be correct.
- Click Next >>.
- Set the desired interval (1.0 or 5.0 or a multitude of 5.0 seconds!), date and time and select GLONASS if necessary .
- Click Next >>.
- Select the desired data formats and compression methode.
- Click Next >>.



**Authentication:**

- Put in you own project name for the set of data. This project name needs to be unique, the project name will become the name of the zip file containing the data, the name of the data files is constructed of the first 4 characters of your project name and the gps day number . This project name will also be given on your invoice.
- Username and password will be send to you by us after applying by the Application form for RINEX data, available on our website [www.06-gps.nl](http://www.06-gps.nl) at the English page.
- Click Next >>.
- Wait for a few seconds then click Refresh till the concerning project gets the status Ready. Not clicking Refresh makes the project stay on the status Processing. Too often too fast clicking makes the webserver crash, however your project/set of data will not be lost, only you need to log on again.!
- Then select the project, one project at a time only, and click Download now. With certain network securities you need to hold down the cntrl button while clicking Download now. Also it might be possible the download is blocked in such way that you need to cancel this download blocking feature temporarily. How to do this is given at the end of this manual.
- Send by E-mail is not supported.
- Download the data set file by Safe / Opslaan then unzip.
- You can return to the main screen and start selecting and collecting another set of data or close off the application .



## Download-blocking

- In case downloading the data set does not start even with the ctrl button, it could be necessary to temporarily cancel the download blocking in the main screen of the webserver. This can be done by clicking the message bar that has appeared directly below the standard toolbars, usually yellow coloured, and select Dowload file.
- Click OK in the java applet window.
- Click Existing jobs left bottom of the screen.
- Then repeat the authentication, select the correct project and repeat the download procedure.

